



**Precise area measurement and task management**  
Able to calculate area in Rai/Ngan, track income and expenses and organize work schedules. Manages your work professionally.



**Accurate update on every movement**  
Indicates the coordinate and operating area of an individual or a group of machine. Real-time monitoring of engine status\*\* is also available.  
Note: \*Performance may vary depending on the machine speed or internet speed./ \*\*Indicates operating status such as engine stop, engine start, key switch Off, 5-minute idling, and machine traveling.



**Anti-theft alert**  
Operating perimeters for the machine can be set. An alert will be issued if the machine goes out of these perimeters.  
Note: This function is operable if the engine is turned off for no later than 1 month, or if there is an attempt to disconnect the signal receiver box from the machine.



**Efficient maintenance**  
Notifies maintenance at appropriate intervals and indicates battery status.



## Specifications KUBOTA Tractor *M-SERIES*

Tractor			M6040-B	M7040-B	M108S-B
Engine			Direct Injection, Liquid cooled 4 Cylinder diesel		
Engine Type			V2403-DI-TE2		
Engine Model			V3307-DI		
Gross hp			60.7		
PTO power*			51.7		
Rated revolution			2,700		
Total displacement			2,434		
Bore and stroke			87 x 102.4		
Battery capacity			12		
Fuel tank capacity			57		
Fuel type			Diesel fuel (B7, B10 and B20)		
Travel system			Four-wheel drive (4WD)		
Tire size	Front	in.	9.5 - 22	9.5 - 24	13.6 - 24
	Rear	in.	16.9 - 28	16.9 - 30	18.4 - 34
Main gear shift lever			Synchro-shuttle		
Shuttle shift lever			Single dry plate		
Clutch			8 Forward, 4 Reverse		
Transmission			Hydraulic power steering		
Steering			Mechanical, Multi wet disks		
Brake System			Bevel gear		
Front wheel drive system			Rear wheel		
Differential lock system	Forward	km / hr	2.5 - 28.3	2.5 - 29.7	2.09 - 37.26
	Reverse	km / hr	3.2 - 9.9	2.5 - 30.1	2.11 - 37.58
Speed			540 @ 2,295		
PTO (Engine speed)			540 @ 2,205		
Hydraulic system			41.6		
Pump capacity			65		
Hydraulic control system			Position control, Draft control and Mix control		
3-Point hitch			SAE Category I & II		
Max. lift force	At lift rod end	kg	1,900	2,300	3,900
	24 in. behide lift point	kg	1,500	1,800	3,400
Dimensions			1,800		
Weight			3,420		
Overall length without 3P			1,865		
Overall width			2,000		
Wheel base			2,340		
Overall height (with ROPS)			435		
Min. ground clearance	Front	mm	1,360 - 1,460	1,520	1,640
	Rear	mm	1,420 - 1,720	1,520 - 1,720	1,700 - 2,010
Tread					

Note: The company reserves the right to change any details without prior notice.  
Operating instructions: To obtain optimal operation, read the operating instructions from the Operation and Maintenance Manual of each KUBOTA tractor.

**SIAM KUBOTA Corporation Co., Ltd.**  
101/19-24, Moo 20, Navanakorn Industrial Estate, Tambon Khlongnueng  
Amphur Khlongluang, Pathumthani 12120  
Tel. +66 (0) 2909 0300 Fax. +66 (0) 2909 1698  
Published in March 2025  
www.siamkubota.co.th | Siam Kubota



# KUBOTA Tractor

## *M-SERIES* 60 / 70 / 108 HP



Deep Tilling, Strong, Powerful **B20** Compatible with diesel



# KUBOTA Tractor

## M-SERIES *Deep Tilling, Strong, Powerful*

The KUBOTA Tractor M-Series features a diverse range of models of 60 / 70 / 108 HP, all backed by proven test runs in the actual fields, ensuring efficient, durable and powerful operation in any field conditions.



### Experience the ultimate performance and mobility

#### Center Direct Injection (E-CDIS) Diesel Engine

Fuel is injected at the center of the cylinder for complete combustion. Additionally, the turbocharger\* air compression system helps save fuel. Enhances efficiency by compressing air for engine ignition, delivering maximum horsepower.

\*Except 70 HP model



### Power transmission system

The synchromesh transmission system, along with the shuttle shift lever, enables forward-reverse shifting without stopping, making tillage and field conditioning quick and efficient.

60 HP	8 Forward, 4 Reverse
70 HP	8 Forward, 8 Reverse, synchro-shuttle shift lever (Low speed and Reverse shifts only)
108 HP	16 Forward, 16 Reverse, special transmission with swing shift system, automatic hydraulic shuttle shift lever

### Power steering

Hydrostatic steering enables easyturning with minimal effort while offering quicker responsiveness and added convenience with a height-adjustable steering wheel to accommodate the operator's body.

### High ground clearance 4WD drive system

The optimal ground clearance design allows for worry-free driving over ridges and slopes. Stability is further improved by the wide front and rear tire widths, ensuring maximum efficiency in mires.

The designed four-wheel drive system maximizes the tractor's driving power. The front wheels feature limited-slip system to further boosts traction in mires, making it an ideal choice for tilling and dozer work that demands exceptional power.

\*Except 108 HP model



Drive with confidence, backed with strength and durability of KUBOTA Tractor



Cast iron gear case

Durable and robust, with outstanding resistance to impacts during operation.



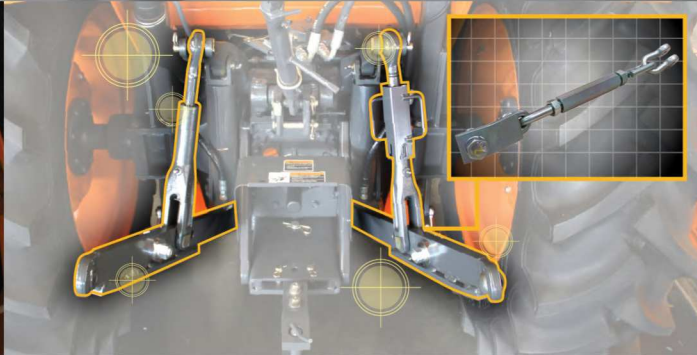
Large front axle

Designed specifically for KUBOTA tractors, it provides the strength and resilience needed to handle any field conditions.



Enclosed bevel gears front wheel hub

Withstands high torque to deliver superior driving power. The enclosed system protects against water and dust intrusion, prolonging its service life.

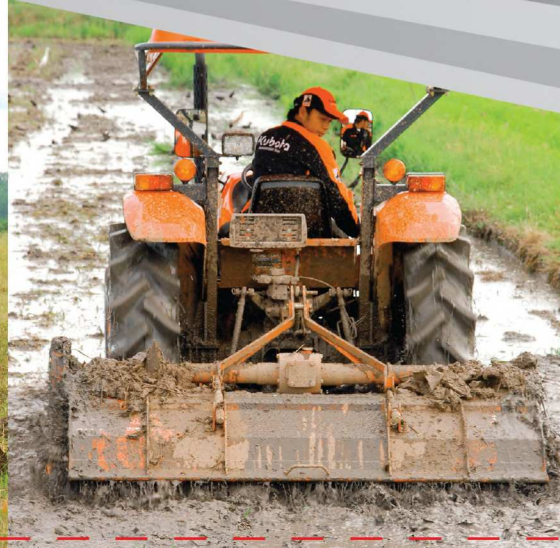


3-point hitch

The new design provides even more exceptional strength and durability.

- Lower link\* Metal plates of 19 mm enhance robustness and durability to withstand extreme traction force.
- Check chain\* The new design features a larger 20 mm thread diameter, increasing strength by up to 20%. It also includes hexagonal adjusters for easier implement adjustments.
- Lift rod connecting rod\*\* Increases thread size to 30 mm to improve strength up to 50% equivalent to large tractors.

\*70 and 108 HP models  
\*\*70 HP model



Experience ultimate comfort



Large seat

The height is adjustable to snugly fit the operator, enhancing convenience and eliminating fatigue.



Digital dashboard display

Displays engine speed, fuel level and operating hours. The LED tachometer is easy to read in a night environment.



Illuminating headlight

Thoroughly lights up the working area, adding visibility to ensure safety at nighttime.



Single-piece bonnet

Featuring a sleek and modern curved design, the engine maintenance is made easy thanks to a shock absorber that supports the opened bonnet.



Large fenders

More coverage offers more wheel protection against splattering mud during work.





Comprehensive range of implements designed exclusively for KUBOTA Tractor



Front Dozer  
TRA CHANG

Soil rollover is efficient without wheel slippage, leading to fuel savings. The blade frame features multiple attachment points to the tractor, ensuring optimal force distribution and extending its service life.



Disc Harrow  
TRA CHANG

Optimal performance and fuel saving are achieved when used with KUBOTA tractor. The Japanese-imported bearings ensure durability, while the furrow can be adjusted to suit the specific area, providing excellent fine tilling.



Disc Plow  
TRA CHANG

Optimal performance and fuel saving are achieved when used with KUBOTA tractor. The Japanese-imported bearings ensure durability, while the furrow can be adjusted to suit the specific area, providing excellent deep plowing.



Rotary  
TRA CHANG

The blade, imported from Spain, undergoes a specialized hardening process to enhance its strength and durability. Additionally, it is designed for fine tilling while remaining lightweight and fuel-efficient.



Fertilizer Spreader  
KUBOTA

This Japanese-imported spreader has spreading width of up to 14 meters\* to provide quick and thorough spreading coverage. It comes equipped with a 200-liter fertilizer tank and is compatible with many types of chemical fertilizers such as pellets, grain and powder.



Sugarcane Planter  
TRA CHANG

Consistently plants sugarcane billets at a planting depth of up to 30 cm.\* This allows sugarcane to fully absorb moisture and grow optimally, maximizing the space efficiency of your farm.

\*Test operation with KUBOTA Tractor M9540 model, at L3 shift, 1500 rpm, in loam soil at new 3-months sugarcane plot, Kanchanaburi province.



Sugarcane Fertilizer Ripper  
TRA CHANG

Specifically designed for fertilizing sugarcane farms, this implement ensures that fertilizer is deeply buried near the sugarcane roots for optimal nutrient absorption and growth. It features a 200-kg fertilizer tank for continuous operation, along with cone-type rippers and safety bolts on each ripper leg.

Implement specification table categorized based on the tractor's engine power

Tractor engine power	60 HP	70 HP	108 HP
Implements			
Front dozer	✓	✓	✓
Disc harrow	✓	✓	✓
Disc plow	✓	✓	✓
Rotary tiller	✓		
Fertilizer spreader	✓		
Sugarcane planter			✓
Sugarcane fertilizer ripper			✓

Work confidently with support from SIAM KUBOTA standardized services



2-years or 2,000-hours warranty  
Whichever comes first. Periodic inspection of tractors is provided to ensure reliability.



1-5-12 Maintenance and Khum Aun Jai Program  
Provides 5 free inspection services at the 2nd year mark from the machine delivery date to ensure continuous care for your machine.



SIAM KUBOTA Service Hotline 1747  
Give advice on operation, maintenance, technical problems and service appointment. Available daily from 7.00 - 19.00 without any days off.



KUBOTA Service Care  
Offers inspection service for KUBOTA tractor past the warranty coverage, with free-of-charge checkup privilege and spare part discount as specified by SIAM KUBOTA.



SIAM KUBOTA Service Center  
Comprehensive after-sales services are provided with standardized nationwide service centers and authorized dealers.



KUBOTA Genuine Spare Parts  
A selection of over 80,000 KUBOTA Genuine Spare Parts is available at nationwide authorized dealers and online KUBOTA Store.



SIAM KUBOTA VIP Program  
Get 20% off spare parts or gifts on special occasions.



KUBOTA Agricultural Machinery Driving School  
Learn tractor driving skills for safe, proper and efficient proper operation.



SIAM KUBOTA Leasing  
Down payment of KUBOTA and TRA CHANG products is possible via SIAM KUBOTA Leasing Co., Ltd.

