

M135X

SIAM KUBOTA Corporation Co., Ltd.
101/19-24 Moo 20 Navanakorn Industrial Estate
Tambon Khlongnueng Amphur Khlongluang,
Pathumthani 12120
Tel. +66 (0) 2909 0300 Fax. +66 (0) 2909 1698
Published in March 2025
www.siamkubota.co.th |  Siam Kubota

KUBOTA CONNECT
02-029-1747 

KUBOTA Tractor

M135X

135 HP



Kubota

Agri-Innovation For The Future

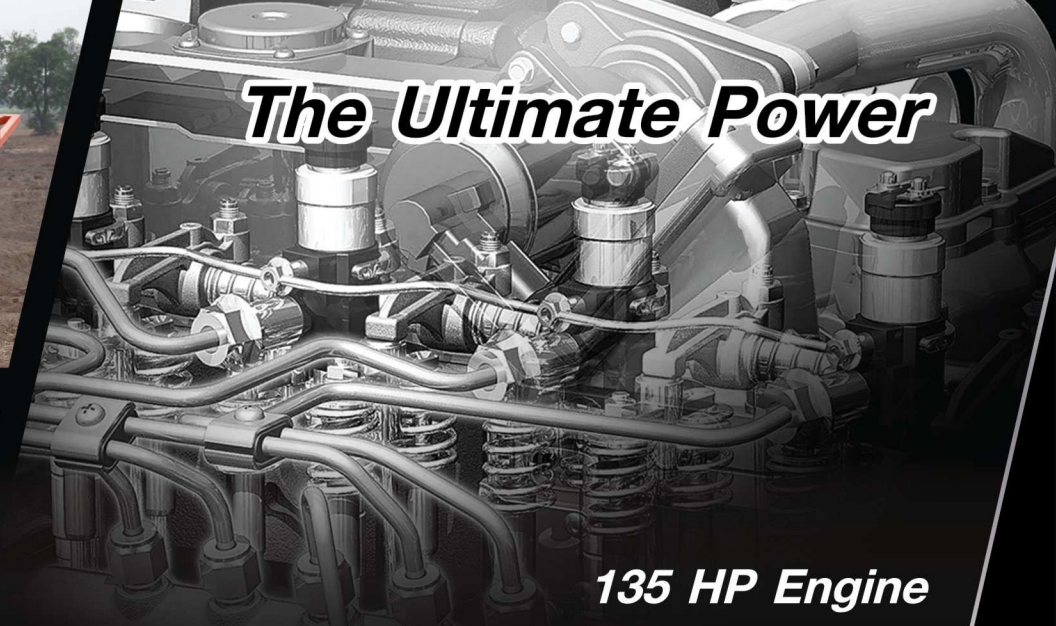
Deep tilling with strength and power



KUBOTA Tractor *M135X*

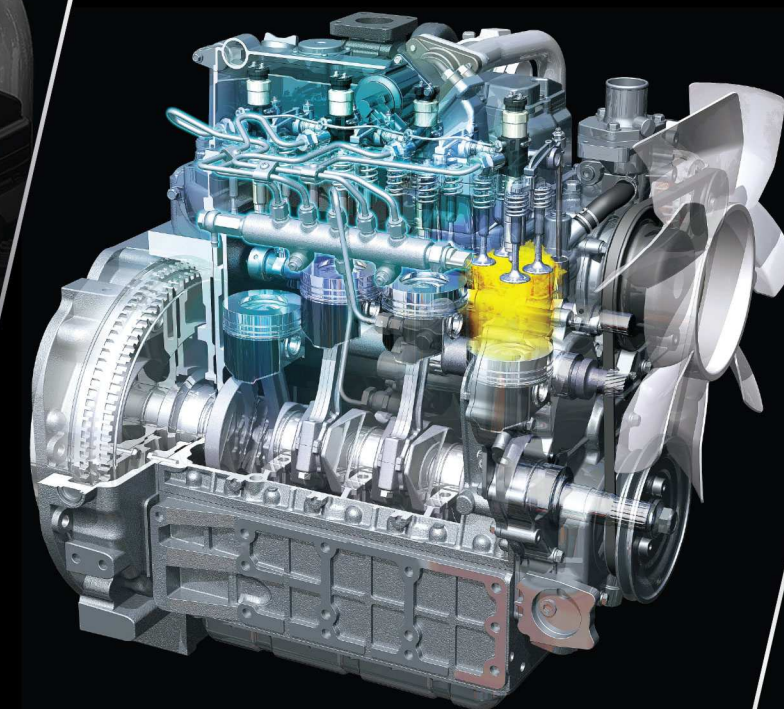


The Ultimate Power



135 HP Engine

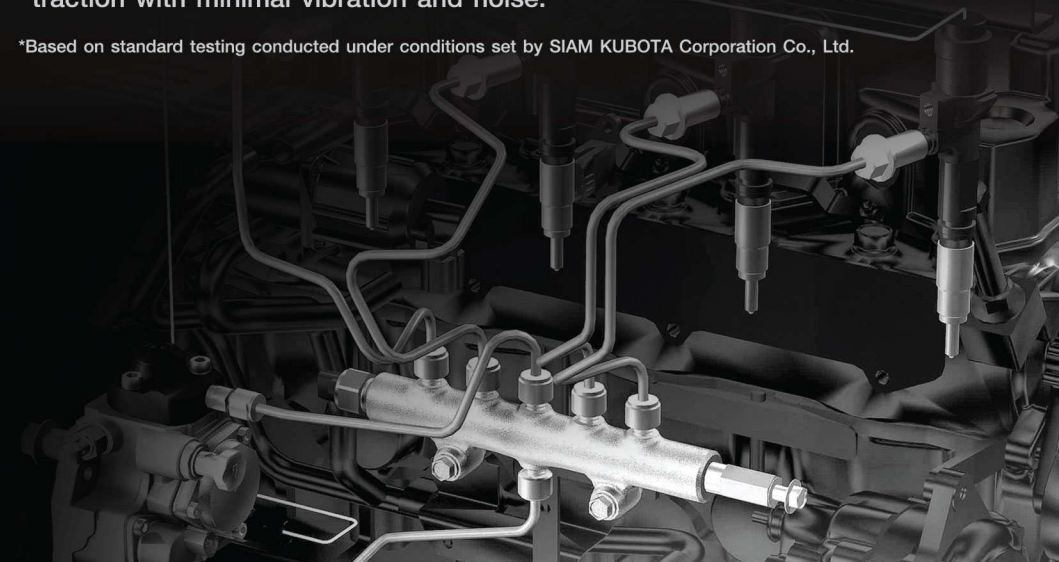
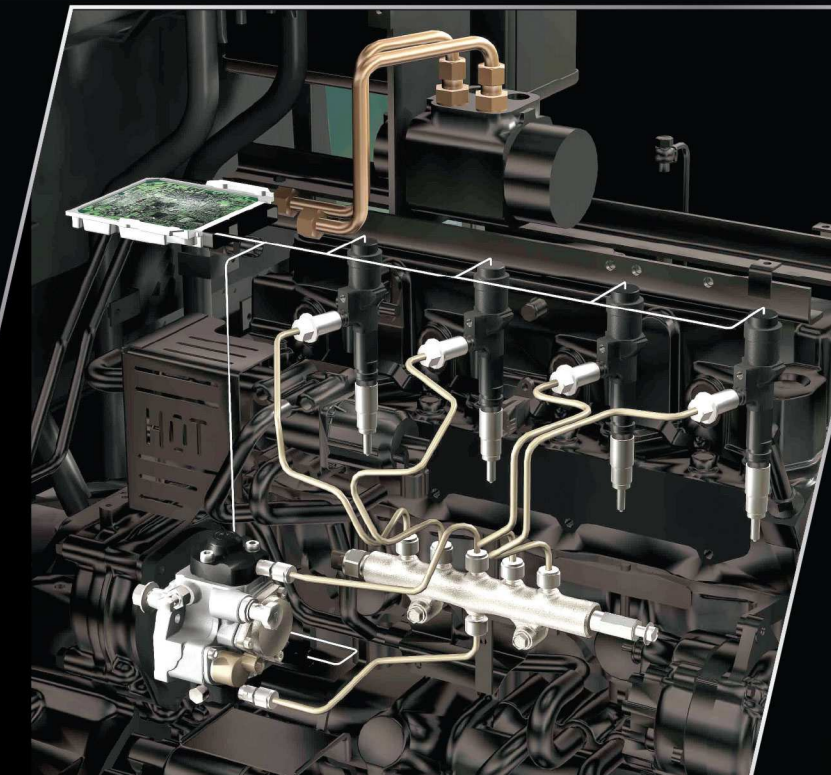
Unstoppable...V6108-TI-CRS engine with 135 HP, the most powerful of KUBOTA tractor engines, features a turbocharger and inter-cooler that boost intake air ignition efficiency to improve fuel combustion. This combination maximizes power while minimizing black smoke and emissions.



Common rail direct fuel injection system

Fuel-efficient*... The common rail direct fuel injection diesel engine uses ECUs to precisely control pressure, stroke, timing, and fuel delivery amount across all engine speeds. This helps save fuel and deliver high traction with minimal vibration and noise.

*Based on standard testing conducted under conditions set by SIAM KUBOTA Corporation Co., Ltd.





Intelligent control system CAN (Control Area Network)

The patented KUBOTA Tractor technology employs up to four ECUs to manage various tractor systems—hydraulic, transmission, engine, steering and digital display—ensuring they work in synchronization for accurate, precise and high-quality tractor operation.

Top-of-the-line Technology



1. Intelli-shift transmission

Simply shifting gears at the push of a button across 16-forward and 16-reverse shifts. Shifting can be done from either the control lever or the buttons on the armrest, ensuring convenience and mobility while you work.



2. Auto-hydraulic shuttle shift lever

Shifting between forward and reverse gears can be done without stopping and depressing the clutch. The wheel-slip protection also helps reduce damage to the planting area.



3. Automatic shifting system

Enables the operator to fully concentrate on their work with automatic up-down shifting according to changing area conditions.



4. Maximum engine speed limit system

The operator can set the maximum engine speed limit (from 900-2,200 rpm) to ensure consistent performance. This limit can also be used together with both the foot acceleration pedal and the hand acceleration pedal.



5. Engine speed control system

The system prevents a drop in engine speed when faced with increasing workloads, suitable for heavy tasks that demand high engine output or require PTO. This ensures steady engine speed to deliver consistent performance while saving fuel.



6. Engine speed memory setting system

The engine speed can be saved as two A and B preset values, allowing for instant access and applications during operation.



7. Automatic tilling level control system

Automatically maintains the horizontal level and operating angle of the implements, ensuring consistent and even tilling results.



8. Implement level control system

The implements can be lifted at the push of a button without the need to adjust the position control lever. The operator is not required to adjust the implement depth each time it is lowered, such as after lifting to turn at the headland, ensuring smooth, seamless and efficient operation.



Maneuverable to excel in any field



1. Tight turning system

When the tight turning system is activated, the outer front wheels of the tractor will rotate at twice the speed of the inner front wheels, enabling quick, sharp turns at the headland.

2. Enclosed bevel gears front wheel hubs

The bevel geared front wheel hubs that offer high transmission efficiency and can withstand high torque. Additionally, the enclosed hub design keeps out debris and extends their service life.

3. Independent differential lock for front and rear wheels

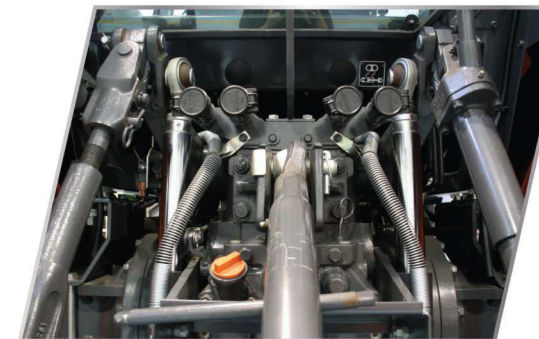
The 4-wheel differential lock system can be easily activated at the push of a button—one button for the front wheels and a foot pedal for the rear. This system is designed to prevent getting stuck in mud. It also includes a differential lock status indicator displayed on the monitor as well.

4. High ground clearance

The intermediate shaft is located between the oil pan, allowing for a flat undercarriage with up to 46.5 cm of ground clearance to ensure agile and easy navigation over obstacles.



Compatibility with a variety of implements



Powerful hydraulic system with standard 2-row auxiliary valves

Capable of lifting implements weighing up to 5,000 kg*. While it comes with two sets of standard auxiliary valves for hydraulic implements, up to four more sets of auxiliary valves can be added to meet various demands and requirements.

*Based on standard testing conducted under conditions set by SIAM KUBOTA Corporation Co., Ltd.



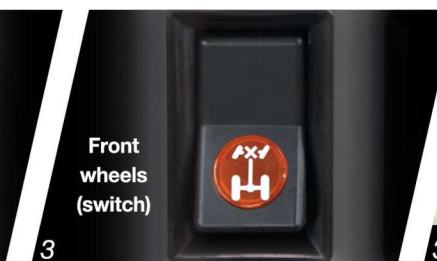
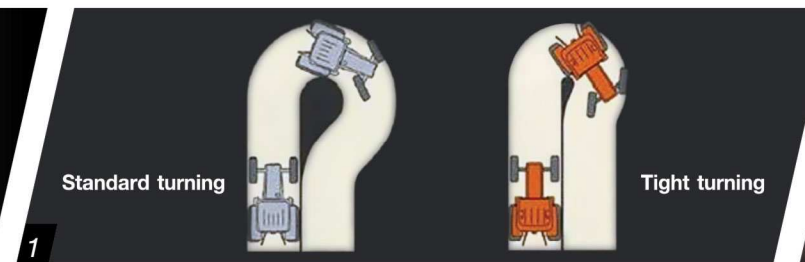
Independent PTO

The PTO features two selectable speeds of 540 and 1,000 rpm. Furthermore, it can be turned ON/OFF independently by simply rotating the PTO knob without stopping the tractor.



3-point hitch control button outside the cabin

The 3-point hitch can be lifted/lowered from outside of the cabin with the button located near the rear fenders of the tractor. This facilitates quick and easy mounting and dismounting implements without the need to frequently enter and exit the tractor.





1. Air suspension seat

Comfortably soft with minimal vibration the seat can rotate left and right and features adjustable suspension to suit the driver's preferences at work.

2. Implement position control and shifting lever on the armrest

Implement position control and shifting can be managed just right for even greater convenience during operation.

3. Side console

Designed with both aesthetics and convenience in mind, the console groups switches and control levers in a semi-circular layout at the center-right of the cabin, ensuring clear visibility and easy access.

4. Dual monitors

Important data, such as travel speed and PTO speed, can be monitored from both the front meter panel and the side console. This ensures that all information is readily available, even when you are working with rear implements.

5. Electronic hand throttle

The acceleration can be finely and easily adjusted with just a light touch.

6. Air conditioner inside the cabin

Work comfortably in any season with an air conditioner that provides both cooling and heating. Its utilization of interior air pressure also improves efficiency in keeping dust out of the cabin.

7. Audio system

Equipped with an MP3 CD player to keep you entertained on your ride.

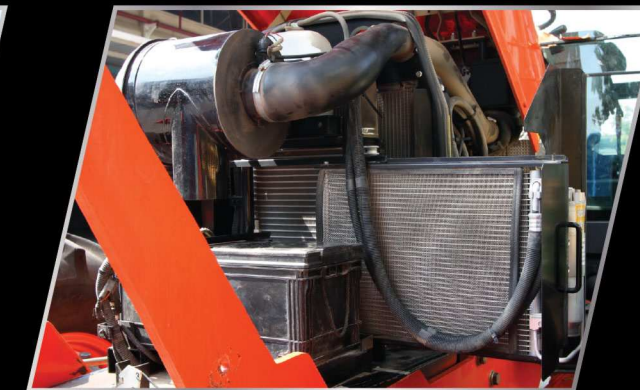
High-class Comfort Drive

Easy Maintenance



Single-piece bonnet with dust grille

A single-piece bonnet with shock absorbers can be easily and quickly opened / closed for ease of maintenance. The outer bonnet grille features extremely fine mesh to prevent pollen and larger dust particles from entering the tractor's engine.



Well-planned engine layout for easy maintenance

The condenser panel can be pulled out for cleaning. The electrical circuit board and hydraulic system are located under the seat for convenient access during inspection and maintenance.

Reliable services at SIAM KUBOTA standard



2-years or 2,000-hours warranty
Whichever comes first with periodic inspection of tractors is provided to ensure reliability.
It is recommended to read the warranty conditions and contents from the warranty book and warranty card.



KUBOTA Genuine Spare Parts
A selection of over 80,000 spare parts is available at SIAM KUBOTA authorize dealers and online KUBOTA Store.



SIAM KUBOTA Service Hotline 1747
Give advice on operation, maintenance, technical problems, and service appointment. Available daily from 7.00 - 19.00 without any days off.



KM Maintenance Package of 1 year or 750 hours warranty
(whichever comes first)
- Free inspection service of 3 times / 1 year
- Free spare part maintenance of 1 year or 750 hrs.
Khum Aun Jai Program
Provides 2 free inspection services at the 2nd year mark. (Free service fees and technician travel expenses, 20% off maintenance spare parts.)



KUBOTA Service Care
Offers inspection service for tractors that are out of warranty coverage, including free checkup and discounts on spare parts as specified by SIAM KUBOTA.



KUBOTA Agricultural Machinery Driving School
Learn tractor driving skills for safe, proper, and efficient proper operation by SIAM KUBOTA.



SIAM KUBOTA Service Center
Comprehensive after-sales services are provided with standardized nationwide service centers and authorized dealers.



SIAM KUBOTA VIP Program
Get 20% off spare parts or gifts on special occasions.



KUBOTA Family
Earn points by purchasing KUBOTA products and spare parts, then redeem them for discounts on spare parts or choose from a variety of gifts.



SIAM KUBOTA Leasing
Down payment of KUBOTA and TRA CHANG products is possible via SIAM KUBOTA Leasing Co., Ltd.

Tractor			M135X	
Engine				
Engine Type			Common rail direction injection	
Number of cylinders			4	
Engine Model			V6108 - TI - CRS	
Compression system			Turbocharger and inter-cooler	
Air cleaner system			Two-stage dry air cleaner	
Gross hp		HP	143.22	
PTO power*		HP	118	
Rated revolution		rpm	2,200	
Total displacement		cc	6,124	
Bore and stroke		mm	118 x 140	
Battery capacity			115 A / 12 V	
Fuel tank capacity			190	
Travel system			Four-wheel drive (4WD), Electric - actuated ON/OFF	
Tire size	Front	in.	14.9 - 24	
	Rear	in.	18.4 - 38	
Main gear shift lever			8 main gear power shift + 2 range gear shift, with clutch button	
Shuttle shift lever			Electro-hydraulic shuttle	
Transmission			16 Forward, 16 Reverse	
Steering			Hydrostatic power steering	
Brake System			Multiple oil-immersed disc brakes	
Front wheel drive systems		m	Enclosed bevel gear front wheel hubs	
Minimum turning radius (with brake)			4.1 (Bi-speed turning ON)	
Travel speed		km / hr	2 - 38.1	
Diffential lock system			Front-rear wheel differential lock, electrical system	
PTO				
PTO (Engine speed)		rpm	540 / 1,000	
Hydraulic system				
Pump capacity		L/min	77.2	
Hydraulic control system			Position control, Draft control, mix control via electrical system	
3-Point hitch			SAE Category II	
Max. lift force	At lifting point	kg	5,000	
	24 in. behide lift point	kg	4,300	
Dimensions				
Weight (excludes front & rear weight)		kg	4,660	
Overall length		mm	4,360	
Overall width (minimum tread)		mm	2,180	
Overall height (Top of canopy)		mm	2,725	
Wheel base		mm	2,690	
Min. ground clearance (Drawbar bracket)		mm	465	
Tread	Front	mm	1,775 - 1,875	
	Rear	mm	1,590 - 2,085	

Note: The company reserves the right to change any details without prior notice.
Operating instructions: To obtain optimal operation, read the operating instructions from the Operation and Maintenance Manual of each KUBOTA Tractor. For more information, please contact KUBOTA authorized dealers nationwide.

Specifications

KUBOTA Tractor *M135X*

135 HP

